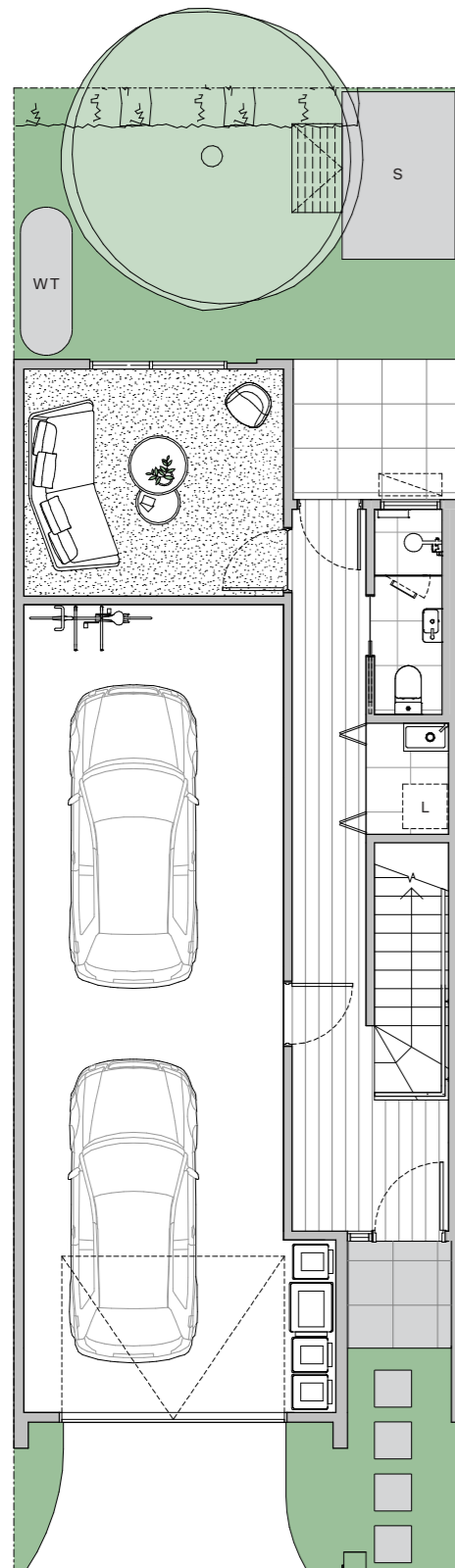


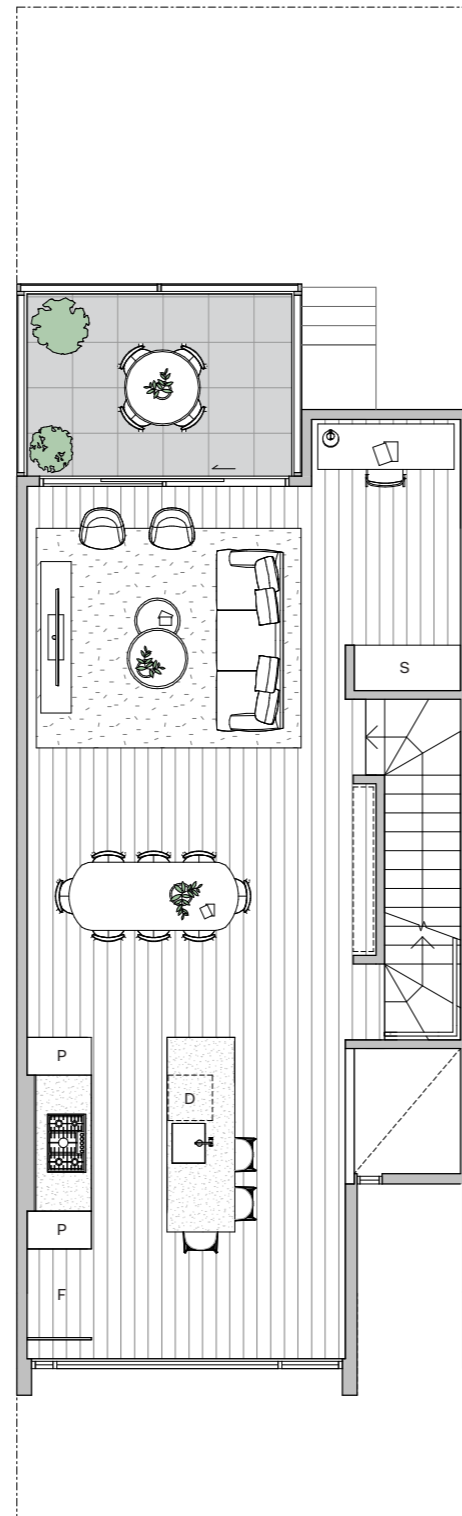


# FLORET

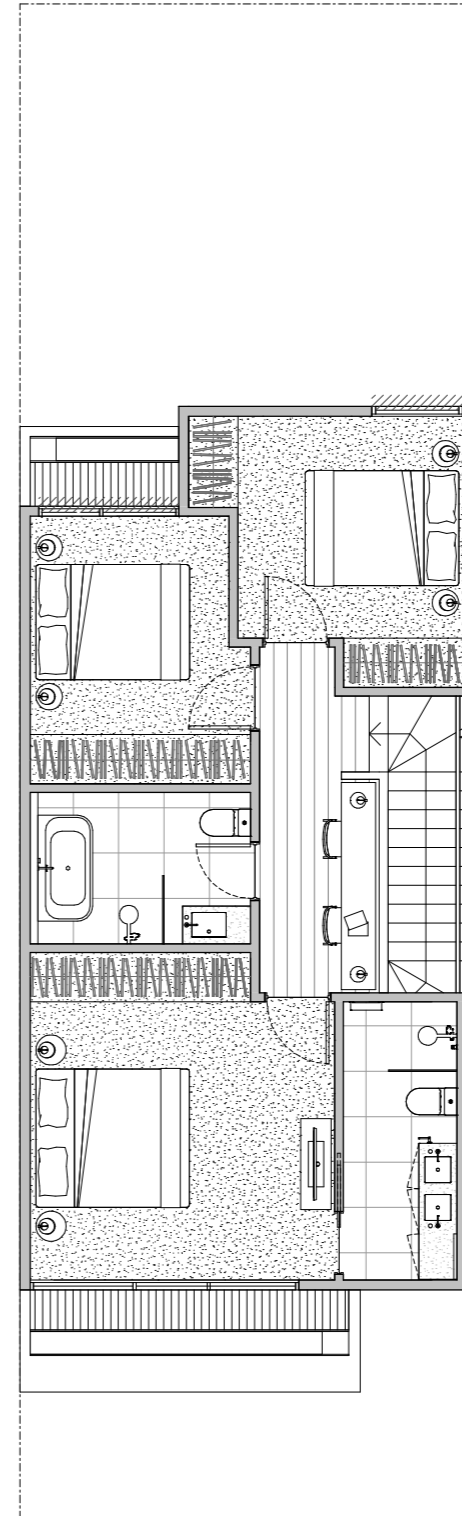
# FLORET



GROUND FLOOR



FIRST FLOOR

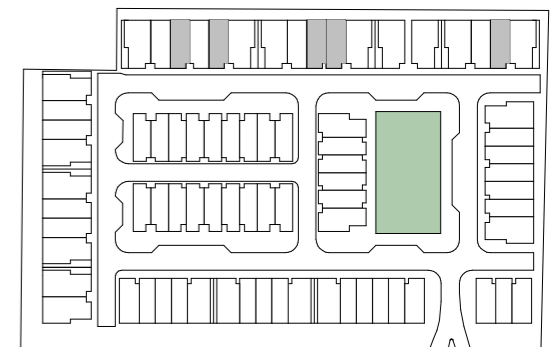


SECOND FLOOR

**TYPE B4**  
LOT 29, 31, 35, 36, 42

Bedrooms	4
Bathrooms	3
Cars	2
Total Building Area	222m <sup>2</sup>
Ground Floor	36m <sup>2</sup>
First Floor	67m <sup>2</sup>
Second Floor	67m <sup>2</sup>
Balcony	10m <sup>2</sup>
Garage	42m <sup>2</sup>

- |    |              |                 |            |
|----|--------------|-----------------|------------|
| D  | Dishwasher   | Obscure Glazing |            |
| F  | Refrigerator | P               | Pantry     |
| L  | Laundry      | S               | Storage    |
| LB | Letter Box   | WT              | Water Tank |



Ferntree Gully Road



These plans are intended as a guide only. The dimensions and areas are approximate only and may not accurately represent the actual dimensions and areas of the townhomes or the spaces within them and are subject to change without notice. In addition, locations of utilities may vary during construction and fittings and fixtures on these plans are for illustrative purposes only. The areas are generally measured in accordance with the Property Council of Australia method of measurement. Prospective purchasers must rely on their own enquiries and should refer to the Contract of Sale and its schedules for all matters to be included in the purchase price of the townhouse, including plans, finishes, fixtures, fittings, appliances and other particulars of sale. Loose furniture and planters are not included. Extent of floor finishes may vary. Landscaping, external space, site boundaries and lot sizes are subject to variances due to site context.